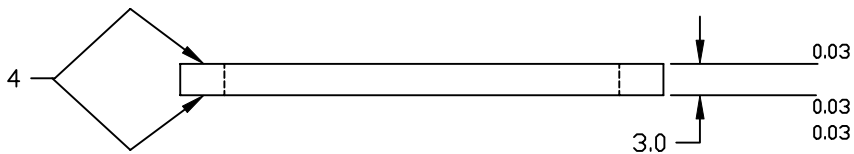
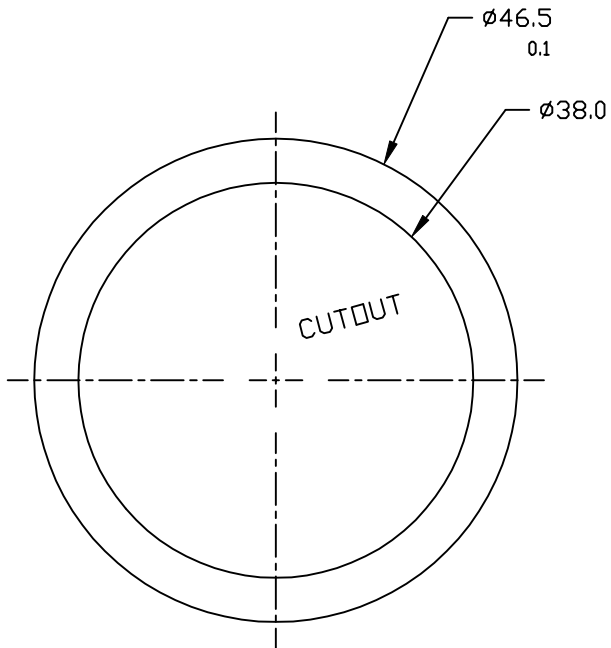


REVISIONS			
REV.	DESCRIPTION	DATE	APPROVED
-	BASELINE RELEASE		
A	CREATE NEW DWG. NUM. FROM OLD DWG., NO DESIGN CHANGE	3/25/97	J. SIEGMUND



NOTES (UNLESS OTHERWISE SPECIFIED):

1. INTERPRET DRAWING PER ANSII14.5M - 1982.
2. SURFACE TEXTURE PER ANSI B46.1 - 1978. MICROMETERS - μm
3. DO NOT SCALE DRAWING. DRAWING MAY BE REPRODUCED.
4. METALLIZE INDICATED SURFACES WITH 13 MICRONS MoMn AND 2.5 MICRONS NI.
5. CHAMFER OR RADIUS EDGES 0.25.
6. LAP OR FINE GRIND SURFACE FINISH TO 0.8 MICRONS.
7. DIMENSIONS APPLY AFTER METALIZATION.
8. CERAMIC TO BE KEPT FREE OF METAL MARKS AND OTHER CONTAMINATION PRIOR TO BRAZING.

25 mm

THIRD ANGLE PROJECTION			
NEXT QTY REQD PER ASSY	FINAL	NEXT ASSY	USED ON APPLICATION

1			96-98% ALUMINA	
ITEM#	QTY	PART NUMBER	NOMENCLATURE	MATERIAL SPECIFICATION
TOLERANCES (EXCEPT AS SPECIFIED)			DO NOT SCALE DRAWING METRIC DRAWING (UNITS: mm)	
OVER	TO	TOLERANCE	<i>Experimental Astrophysics Group</i> UNIVERSITY OF CALIFORNIA, BERKELEY, USA DWG TITLE CERAMIC INSULATOR RING SI DETECTOR	
0	49.99	± 0.1		
50	249.9	± 0.5		
250		± 1	INTERPRET PER ANSI Y14.5-1982 WELDING SYMBOLS PER ANSI/AWS A2.4-79	
ANGLES			APPROVALS	DATE
SURFACE FINISH 0.8			DRAWN J. STOCK	3/21/97
SURFACE TREATMENT			CHECKED D. SIEGMUND	3/21/97
MASS			ISSUED J. STOCK	3/25/97
DWG TITLE			SIZE B	PROGRAM IMAGE
DWG. NO. 8069-A3			DWG. NO. (PREV. 00419)	REV A
SCALE 2/1			SHEET 1 OF 1	