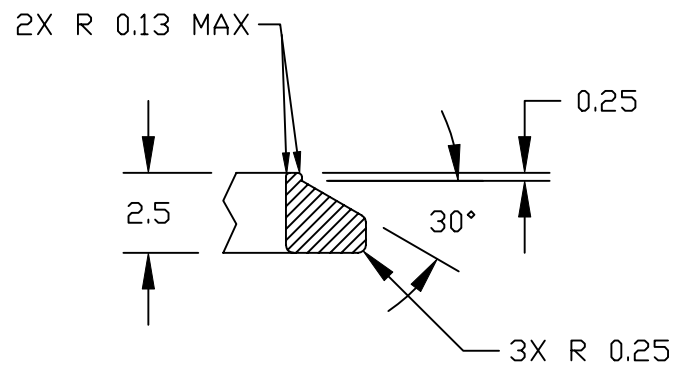
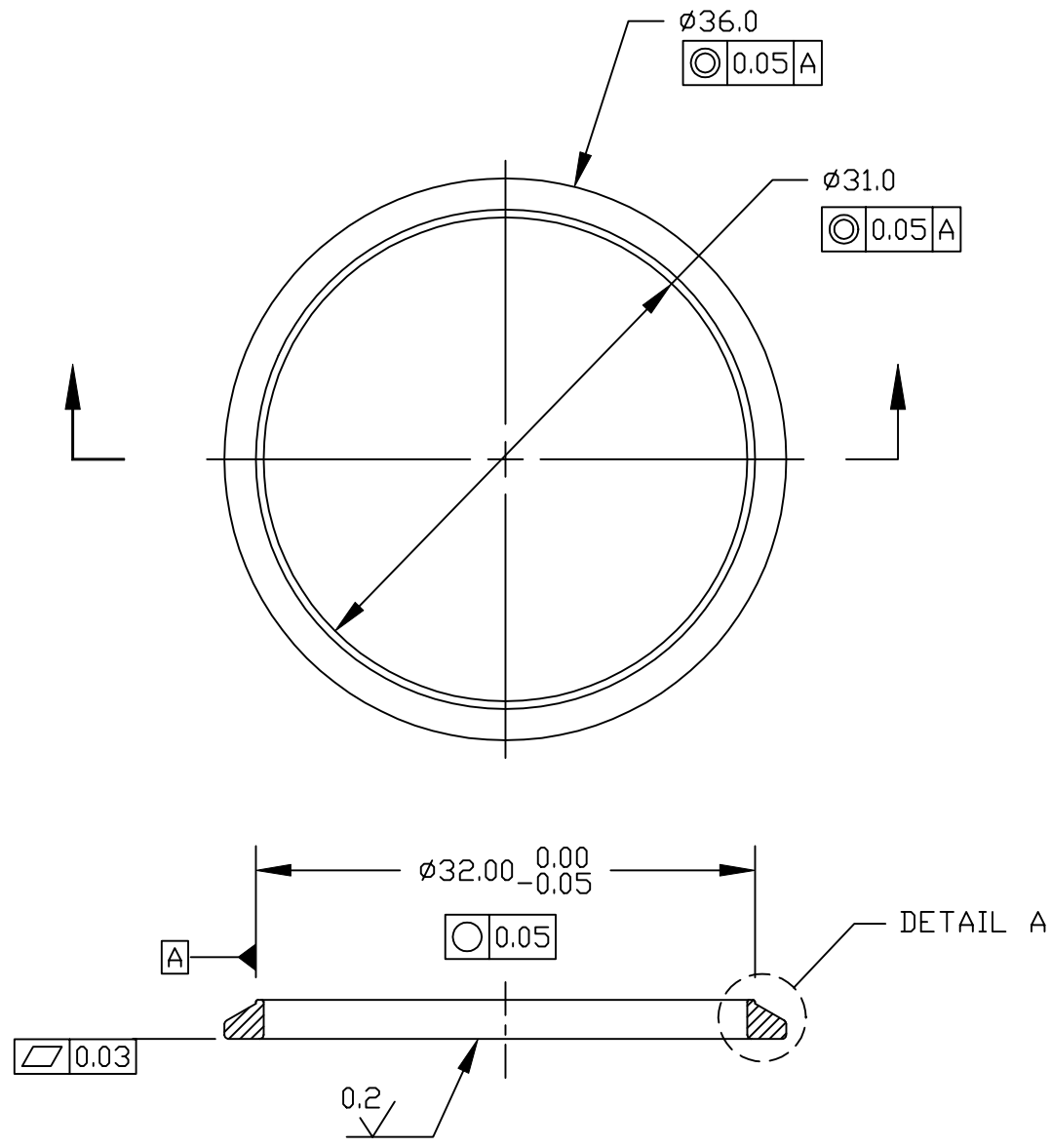


REVISIONS			
REV.	DESCRIPTION	DATE	APPROVED
A	BASELINE RELEASE	5/19/97	D.S.
B	INCORRECT DIA. DIM	6/17/97	D.S.

NOTES:

1. MATERIAL CERT'S REQUIRED.
2. DO NOT USE SULFUR OILS.



DETAIL A  
SCALE 4X

25 mm

ITEM#	QTY	PART NUMBER	NOMENCLATURE	304 SS
				MATERIAL SPECIFICATION

THIRD ANGLE PROJECTION			
NEXT	FINAL	NEXT ASSY	USED ON
QTY REQD PER ASSY		APPLICATION	

TOLERANCES (EXCEPT AS SPECIFIED)		
OVER	TO	TOLERANCE
0	49.99	±0.1
50	249.9	±0.5
250	-	±1
ANGLES		±0.1°
SURFACE FINISH		0.8
SURFACE TREATMENT		ELECTROPOLISH
		MASS

DO NOT SCALE DRAWING METRIC DRAWING (UNITS: mm)		
INTERPRET PER ANSI Y14.5-1982 WELDING SYMBOLS PER ANSI/AWS A24-79		
APPROVALS	DATE	
DRAWN J. STOCK	5/19/97	
CHECKED D. SIEGMUND	5/19/97	
ISSUED J. STOCK	5/19/97	

<p align="center"><i>Experimental Astrophysics Group</i> UNIVERSITY OF CALIFORNIA, BERKELEY, USA</p>			
<p align="center">DWG TITLE MCP PRESSURE PAD SI DETECTOR</p>			
SIZE	PROGRAM	DWG. NO.	REV
A	IMAGE	(PREV. 8538) 8074-A3	B
SCALE	2:1	SHEET	1 OF 1