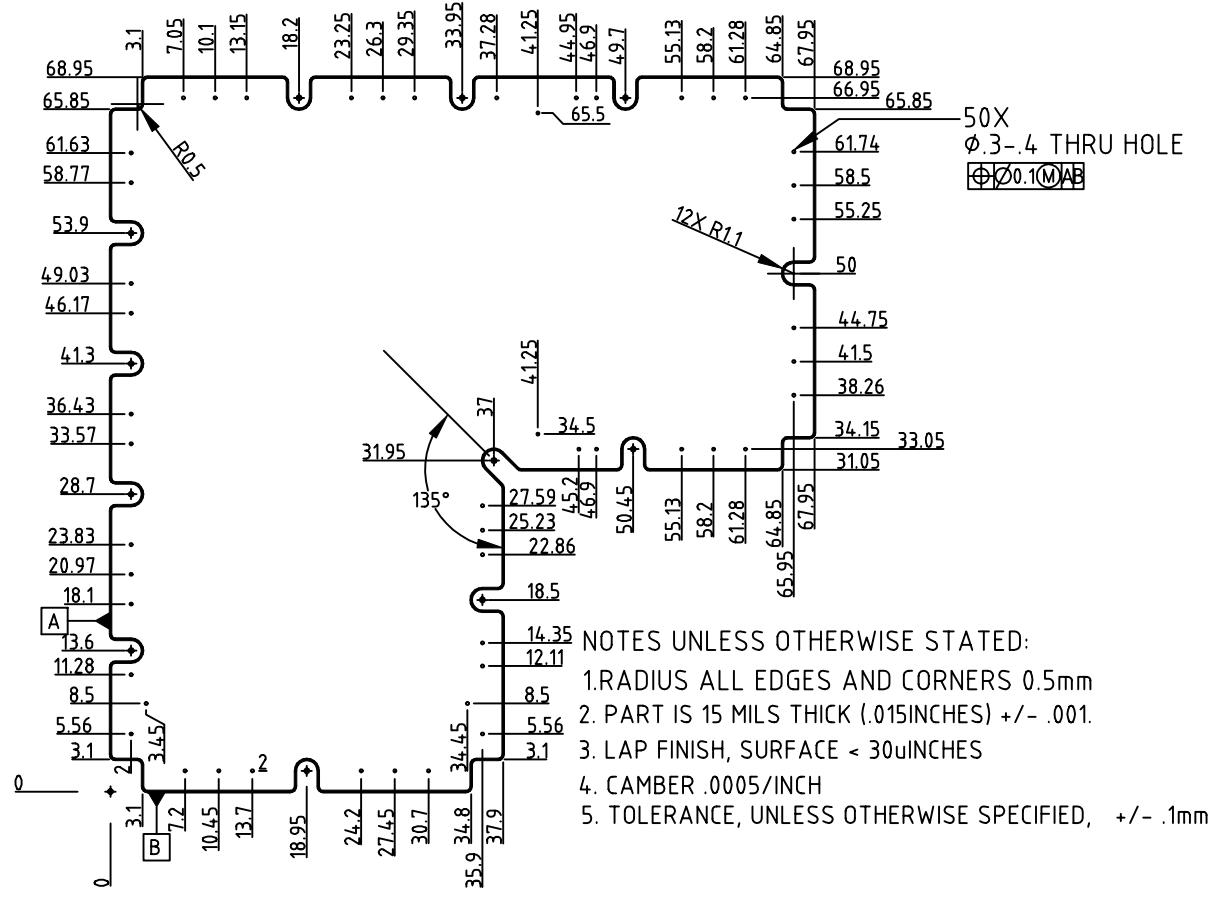


REVISIONS			
REV.	DESCRIPTION	DATE	APPROVED
A	BASELINE RELEASE	7 May 97	
B	CHANGED OUTLINE, MOVED ONE MOUNTING HOLE AND TWO SIGNAL HOLES	12MAY 97	



- NOTES UNLESS OTHERWISE STATED:
1. RADIUS ALL EDGES AND CORNERS 0.5mm
 2. PART IS 15 MILS THICK (.015INCHES) +/- .001.
 3. LAP FINISH, SURFACE < 30μINCHES
 4. CAMBER .0005/INCH
 5. TOLERANCE, UNLESS OTHERWISE SPECIFIED, +/- .1mm

1.	A/R	ALUMINA	96%
ITEM#	QTY	PART NUMBER	NOMENCLATURE
TOLERANCES (EXCEPT AS SPECIFIED)		UNIVERSITY OF CALIFORNIA, BERKELEY, USA	
OVER	TO	TOLERANCE	DWG TITLE
0	49.99	±0.1	FUV SI XDL ANODE ALUMINA SUBSTRATE
50	249.9	±0.5	
250	-	±1	
ANGLES		±1°	
SURFACE FINISH		1.6	
SURFACE TREATMENT		APPROVALS	DATE
		DRAWN J.Hull	7May97
		CHECKED J.Hull	7May97
MASS		ISSUED	
8 grams (est.)			
		SCALE	SHEET 1 OF 1
		SIZE A	PROGRAM IMAGE
		DWG. NO.	8149-A4
		REV	B