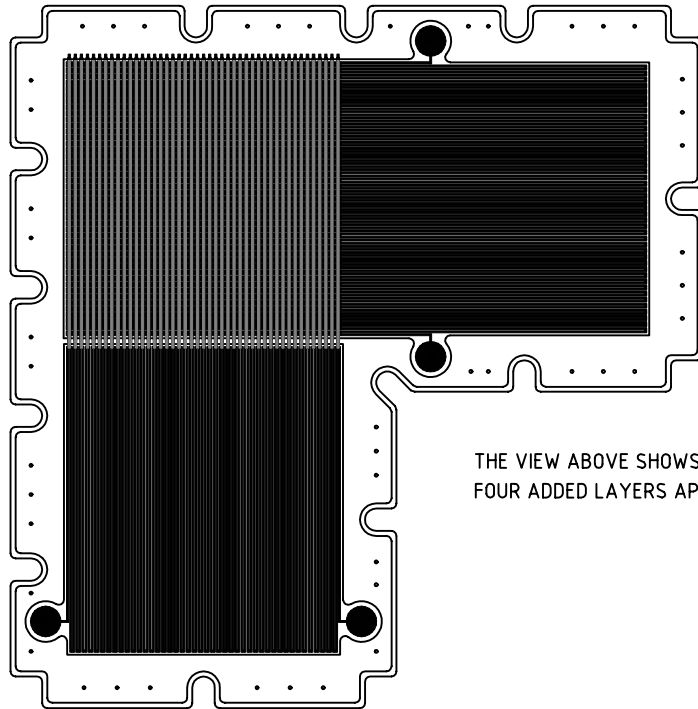


REV	DESCRIPTION	BY	DATE
A	AS FABRICATED FOR FLIGHT FUV SI SYSTEM	HDH	30SEP97



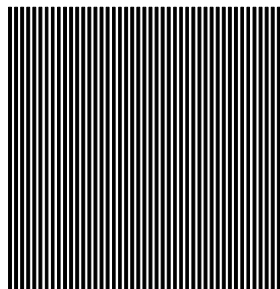
THE VIEW ABOVE SHOWS THE 8150-A4 SUBSTRATE WITH ALL FOUR ADDED LAYERS APPLIED.

LAYER NUMBER	LAYER NAME	STRIP THICKNESS		STRIP WIDTH		STRIP LENGTH		POSITIONAL TOLERANCE	RESISTIVITY (OHM-CM)		DIELECTRIC CONSTANT	DIELECTRIC LOSS FACTOR	RESISTANCE BETWEEN CONDUCTORS
		MIN	MAX	MIN	MAX	MIN	MAX		MIN	MAX			
1	1DK	.015	.030	.250	.300	27.7	27.8	± .010	10 ¹⁰	—	5	.01	100 MEG-OHMS AT 300V
2	2GND	.015	.030	.200	.250	28.2	28.3		—	10 ⁻⁵	N/A	N/A	
3	3DK	.015	.030	.250	.300	28.25	28.35		10 ¹⁰	—	5	.01	
4	4yfinger	.015	.030	.200	.250	28.20	28.25		—	10 ⁻⁵	N/A	N/A	

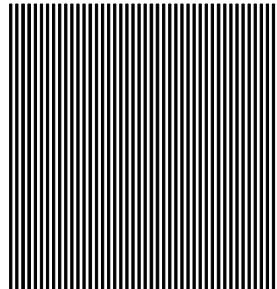
NOTES:

- THIS DRAWING BEGINS WITH AN 8150-A4 PARTIALLY COMPLETED ANODE, AND GENERATES A COMPLETED XDL DETECTOR BY ADDING THE Y FINGERS OF THE DETECTOR. THE COMPLETED DETECTOR IS USED ON THE IMAGE FUV INSTRUMENT.
- THE OPERATIONS CONTROLLED BY THIS DRAWING CONSIST IN APPLYING 4 ADDED LAYERS TO THE SUBSTRATE:
 - THE FIRST IS A SERIES OF STRIPS OF DIELECTRIC AS SHOWN ON DRAWING LAYER 1dk. IT MAY BE APPLIED IN A SINGLE COAT, OR IN MULTIPLE COATS IF THAT IS NECESSARY TO INSURE AN ABSENCE OF PIN HOLES.
 - THE SECOND IS A SERIES OF CONDUCTING STRIPS AS SHOWN ON DRAWING LAYER 2gnd. NOTE THAT EACH STRIP MAKES ELECTRICAL CONTACT WITH THE COPPER GROUND PLANE ON THE SUBSTRATE AT BOTH ENDS. THESE STRIPS ARE CENTERED OVER THE DIELECTRIC STRIPS OF LAYER 1dk, AND MAY NOT MAKE ELECTRICAL CONTACT WITH THE X FINGERS ALREADY ON THE SUBSTRATE.
 - THE THIRD LAYER IS A SERIES OF DIELECTRIC STRIPS WHICH ARE CENTERED OVER THE CONDUCTING STRIPS OF LAYER 2gnd. MULTIPLE COATS MAY BE USED TO INSURE THE ABSENCE OF PIN HOLES.
 - THE FINAL LAYER IS A SERIES OF CONDUCTING STRIPS AS SHOWN ON DRAWING LAYER 4yfingers. THEY ARE CENTERED OVER THE DIELECTRIC STRIPS OF LAYER 3dk. EACH STRIP MAKES ELECTRICAL CONTACT WITH THE CORRESPONDING POINT ON THE Y DELAY LINE WHICH IS ALREADY ON THE SUBSTRATE.
- DIMENSIONAL INFORMATION FOR EACH APPLIED LAYER IS TO BE TAKEN FROM THE FILE 8155-A4A.DXF, AND THE TABLE ABOVE.

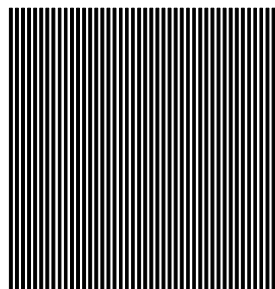
THE FOUR VIEWS BELOW SHOW EACH OF THE FOUR ADDED LAYERS



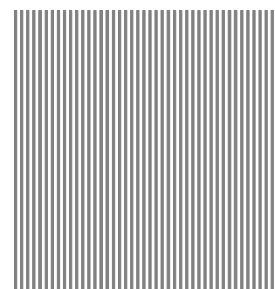
1dk



2gnd



3dk



4yfingers

REVIEWS		NAME/DATE	TITLE	UNIVERSITY OF CALIFORNIA AT BERKELEY	
CHECKED	CURRENT RELEASE	INITIAL RELEASE	FILE NAME	SPACE SCIENCES LABORATORY	
SYS ENGR			UCB_ohm.dwg	IMAGE FUV	
	HDH/30SEP97	DRAWN BY	J. HULL	FUV SI XDL ANODE CROSSED LAYER FAB	
		DATE	7 MAY, 1997	8155-A4	
				A	