

Charge-exchange limits on low-energy α -particle fluxes in solar flares

H. S. Hudson^{1,2}, L. Fletcher², A. L. MacKinnon², and T. N. Woods³

¹SSL, UC Berkeley, CA, USA 94720; ²School of Physics and Astronomy, SUPA, University of Glasgow, Glasgow G12 8QQ, UK; ³Laboratory for Atmospheric and Space Physics, University of Colorado, 1234 Innovation Dr., Boulder, CO 80303, USA

hhudson@ssl.berkeley.edu

Received _____; accepted _____

ABSTRACT

This paper reports on a search for flare emission via charge-exchange radiation in the wings of the Lyman- α line of He II at 304 Å, as originally suggested for hydrogen by Orrall & Zirker (1976). Via this mechanism a primary α particle that penetrates into the neutral chromosphere can pick up an atomic electron and radiate recombination radiation before it stops. The Extreme-ultraviolet Variability Experiment (EVE) on board the *Solar Dynamics Observatory (SDO)* gives us our first chance to search for this effect systematically. The Orrall-Zirker charge-exchange mechanism has great importance for flare physics because of the essential roles that particle acceleration plays; this mechanism is one of the few proposed that would allow remote sensing of primary accelerated particles below a few MeV nucleon⁻¹. We study ten events in total, including the γ -ray events SOL2010-06-12 (M2.0) and SOL2011-02-24 (M3.5) (the latter a limb flare), seven X-class flares, and one prominent M-class event that produced solar energetic particles (SEPs). The absence of charge-exchange line wings may point to a need for more complete theoretical work. Some of the events do have broad-band signatures, which could correspond to continua from other origins.

Subject headings: Sun: flares — Sun: photosphere

1. Introduction

The behavior of high-energy particles in solar flares lies at the core of the physics. We detect such particles in flares via remote sensing of their bremsstrahlung continuum (for electrons) and via γ -ray line and continuum emissions for energetic ions. The ion-related continua include those from pion decay and the “nuclear continuum” composed of unresolved lines. Flare energy released suddenly from the coronal magnetic field tends to appear as high-energy particles (e.g., Lin & Hudson 1976; Ramaty et al. 1995; Mewaldt et al. 2008). Unfortunately, though, the X-ray and γ -ray emissions are not generally sensitive to non-thermal electrons at energies below about 10 keV, or protons below about 20 MeV, respectively.

Orrall & Zirker (1976) proposed one of the few plausible techniques capable of filling in this major observational gap, namely the charge-exchange line radiation that could be created by lower-energy particles. Historically, we note that the proton aurora was first identified via a similar technique: the observation of Doppler-shifted $H\alpha$ radiation (Vegard 1939; Eather 1967). In this mechanism a fast proton penetrates a region of low ionization, picks up an electron, and then radiates a Doppler-shifted emission-line spectrum. For a solar proton moving directly away from the observer, i.e., towards the photosphere from a coronal source at disk center (assuming \mathbf{B} radial), the hydrogen Lyman- α line would appear at 5-30 Å to the red, for proton energies of 10-100 keV (Orrall & Zirker 1976). A more complicated beam geometry would generally produce both red and blue line wings and alter the spectral mapping. Charge-exchange line wings will also develop for other lines, such as the He II Lyman- α line at 304 Å that we study in this paper.

The intensity of the Lyman- α charge-exchange radiation depends upon several factors, as discussed further in several papers (Canfield & Chang 1985; Brosius et al. 1995; Fisher et al. 1985; Brosius & Woodgate 1999). First one must assume the existence of a proton

beam in the first place; the particles producing the γ -ray emission may have broad pitch-angle distributions (see Simnett 1995, for a review of proton effects in solar flares). The intensity of the beam obviously dictates the intensity of the emission; Orrall & Zirker (1976) assumed a proton beam flux of only 4×10^7 erg cm⁻² s⁻¹, a weak flare, whereas Canfield & Chang (1985) extended the theory to a proton beam intensity comparable in energy to that assumed to be present in a major flare ($\sim 10^{11}$ erg cm⁻² s⁻¹). The protons may induce wave-particle interactions (Tamres et al. 1989) that can compete with the more standard theory (e.g., Emslie & Brown 1985), based on Coulomb collisions, that is often applied to problems of particle propagation in solar flares. Alternatively they may be a part of a neutral beam (e.g., Martens & Young 1990). For the charge-exchange mechanism to work, the high-energy ions must propagate in a sufficiently un-ionized medium, and yet not ionize it, so that the charge-exchange process remains efficient; the ionization of the plasma requires a finite time interval that may compete with the time scales for flare development. Detailed calculations such as those of Canfield & Chang (1985) invoke equilibrium conditions between the beam and the target, but also discuss the time scales over which heating (which greatly reduces the intensity of the charge-exchange emission) results from the beam interactions themselves.

The helium line wings produced by charge-exchange reactions were mentioned by Orrall & Zirker (1976), and then calculated in detail by Peter et al. (1990). The ions accelerated in a solar flare almost certainly include a proportion of α particles (Share & Murphy 1997); the He II wing intensity will depend the α /proton ratio, which Share & Murphy (1998) find to be significantly larger than for the ambient photosphere, perhaps more than 50%. As with the Ly α charge-exchange radiation, the signal should appear as broad wings of the line, with the peak red (or blue) wavelength determined by the assumed decrease of primary particle flux (at large $\Delta\lambda$), and the diminishing primary particle range against collisional losses (at small $\Delta\lambda$).

The EVE instrument on *SDO* opens a new window of opportunity to detect and exploit the charge-exchange line wings, owing to its temporal and spectral resolution. Some earlier searches for the charge-exchange mechanism have been possible, but not with comprehensive coverage nor for major events known to have γ -ray emission. Brosius (2001) studied a GOES C3.8 event with CDS data, obtaining no detection but setting a limit of $250 \text{ erg cm}^{-2} \text{ s}^{-1} \text{ sr}^{-1} \text{ \AA}^{-1}$. EVE is a Sun-as-a-star instrument, and thus suffers from relatively high background levels due to non-flare emission from the rest of the Sun. Nevertheless solar flares produce clear signatures across the spectrum (Woods & the SDO EVE Team 2010), with good signal-to-noise ratio for the He II 304 \AA line in major (M- or X-class) flares (e.g., Hudson et al. 2011).

In this paper we describe searches for broad wings of the 304 \AA line for a set of ten flares, including the seven X-class events to date in Cycle 24, plus two others with γ -ray emission detected by *RHESSI*¹ and *Fermi* (Schwartz et al. 2010). We describe the EVE data in Section 2 and the analysis in Section 3, and then discuss what the observations imply – upper limits on the charge-exchange wings, but other interesting features – in Section 4.

2. Data survey

The flares studied, as listed in Table 1, include all of the γ -ray events and X-class flares observed after EVE launch 2010 February 11, up to the time of writing. The first four events in the table are presented in some of the four-panel figures below, and the whole set in ten-panel plots. The Table shows that EVE successfully observed all of the events, and that both of the γ -ray observatories (*RHESSI* and *Fermi*) observed seven of them.

¹The *Reuven Ramaty High Energy Spectroscopic Imager* spacecraft; (see Lin et al. 2002)

Only SOL2011-09-22T11:01 was not observed at high energies, and of the others eight (those marked with “ γ ” in the table) had some signature of the presence of hard X-rays above 100 keV, or γ -ray photons, and hence by implication involved particle acceleration to high energies. The presence of accelerated α particles in these events is hypothetical, but highly likely based on earlier experience (Share & Murphy 1997). The M-class event SOL2011-08-04T03:57 (M9.7) was notable because it produced the strongest² SEP event of Cycle 24 thus far, though at an intensity (>10 MeV) of only about 100 particles $(\text{cm}^2 \text{ s sr})^{-1}$ much smaller than many SEP events of the previous cycle. Finally, two of the events (SOL2011-02-24T07:35 and SOL2011-09-22T11:01) were limb events, with the latter being the weakest HXR/ γ -ray event in the nine-event sample. Figure 1 shows the *RHESSI* hard X-ray and *GOES* soft X-ray time profiles for each of the four primary events.

EVE obtains spectra with 10-s time integrations and approximately 1 Å spectral resolution in two units. The Multiple EUV Grating Spectrograph-A (MEGS-A) grazing-incidence spectrograph covers the 50-370 Å range, with the spectrum presented on a CCD detector (Woods et al. 2010). The resulting signal-to-noise ratio is extremely good, and this gives great freedom for analysis of the charge-exchange line wings, with sensitivity limited only by the photon statistics of the background counting rates. Emission from the non-flaring Sun dominates these background rates, which vary slowly. Figure 2 illustrates the time behavior of the EVE data for SOL2011-02-15T01:56, the most powerful event of the four events chosen for primary analysis (see Figure 1, lower left panel, for comparison with the *RHESSI* and *GOES* time series). The He II line has a strong impulsive-phase component, but not in excess of the gradual component as in the case of SOL2010-06-12 (Hudson et al. 2011). The Figure shows the time variation of spectral irradiance at the nominal wavelength, and the spectrum around that wavelength, without (upper panels)

²<http://umbra.gsfc.nasa.gov/SEP/>

Table 1: Flares Studied

Flare Identifier	Location	Observations		
		EVE	<i>RHESSI</i>	<i>Fermi</i> GBM
SOL2010-06-12T00:57 (M2.0)	N23W43	Y	Y, γ	Y, γ
SOL2011-02-15T01:56 (X2.2)	S20W15	Y	Y, γ	Y
SOL2011-02-24T07:35 (M3.5)	N17E87	Y	Y, γ	Y, γ
SOL2011-03-09T23:23 (X1.5)	N08W09	Y	Y	Y
SOL2011-08-04T03:57 (M9.3)	N19W36	Y	N	Y, γ
SOL2011-08-09T08:05 (X6.9)	N17W69	Y	Y, γ	Y, γ
SOL2011-09-06T22:20 (X2.1)	N14W18	Y	Y, γ	Y, γ
SOL2011-09-07T22:38 (X1.8)	N14W28	Y	N	Y, γ
SOL2011-09-22T11:01 (X1.4)	N15E83	Y	N	N
SOL2011-09-24T09:40 (X1.9)	N12E60	Y	Y, γ	Y, γ

and with (lower panels) subtraction of a pre-flare sample. The nominal centroid wavelength of the doublet is taken from the CHIANTI database (Dere et al. 1997, 2009).

Figure 2 and especially Figure 3 show how stable the EVE/MEGS-A spectra can be. The latter plots the background spectra used for the four primary events. The small differences in level presumably result from global changes of the spectral irradiance in the vicinity of the line, given that the four flares are spread out over many months. The background for SOL2010-06-12 is a little lower than that for the 2011 events, which would be consistent with solar-cycle increase. The MEGS-A stability enables good use to be made of the the excellent counting statistics in the 10-s integrations, for example in constructing difference spectra with good precision as shown in Figure 2, lower-right panel.

Figures 4 and 5 show a search for the beam signature in the four primary events. According to the Peter et al. (1990) calculations, a broad red wing should appear, with a peak wavelength depending on the α -particle energy. The results of Share & Murphy (1997) for other γ -ray events suggest that the particle beams may be diffusive, rather than highly directional. Thus the blue wing may also be enhanced as a result of upward particle motions. This search therefore defined three bands (one blue, two red) in the line wings, as shown by the dotted lines in Figure 4. These locations correspond to weak line emission, as determined by the appearance of the spectra as well as the predictions from the CHIANTI models (see below). The widths of the chosen regions correspond to the MEGS-A spectral resolution (Woods et al. 2010). The time series of excess irradiance in these bands, for each flare, then appears in Figure 5. A wavelength of 31 nm (as shown) corresponds to 0.5 MeV/amu in the initial beam spectrum; at higher energies the charge-exchange cross-section for α particles on H atoms rapidly decreases. No signal with the expected distribution is present; the models predict enhanced wing(s) with peaks separated from the line core by an amount larger than the MEGS-A resolution (Peter et al. 1990). We note the

appearance of a weak flare-associated excess in the search area of the spectrum, in both the impulsive and gradual-phase spectra shown, but that it does not have the spectral profile expected for the broad line wings. For example, there is a comparable blue-wing excess for SOL2011-02-15, which would imply upward particle motions even for an event near disk center (S20W15). Any of the excess fluxes could well be due to unresolved spectral lines or continuum sources (e.g., Feldman 1987). We discuss this and other possibilities in Section 4.

The observed spectra make it clear that MEGS-A observes many lines, and that they tend to dominate the continuum. We have used CHIANTI (Dere et al. 1997, 2009) to get a feeling for the line population in the domain of the He II charge-exchange regions. The spectrum in Figure 6 shows a CHIANTI model with standard assumptions of coronal abundances and the Mazzotta et al. (1998) ionization equilibrium, smoothed to the spectral resolution of MEGS-A, in comparison with the integrated excess spectra observed for SOL2010-06-12. This model uses the flare emission-measure distribution (DEM) of Dere & Cook (1979), as extended to high temperatures by G. Del Zanna.

In studying Figure 6, we note that the normalization to the peak 30.4 nm irradiance predicts a spectrum that is low compared with other components of the observed spectrum. We can also see discrepancies in the line population: Ca XVIII (30.219 nm) is overstated in the model, and we find this to be true of all ten events in our survey. This is beyond the scope of the present paper, but clearly the EVE spectra will produce more definitive emission-measure distributions for major flares than CHIANTI’s representative flare DEM. As regards the continuum, the CHIANTI model points to locations in the spectrum where it may dominate. Note that the impulsive-phase and gradual-phase spectra do not differ by very much in this representation, i.e., the red and blue lines almost overlap. This overlap conceals the fact that the excellent signal-to-noise ratio of EVE allows them to be distinguished quantitatively (e.g., Hudson et al. 2011). We return to this in Section 4.

3. Analysis of ten events

These initial four events show no obvious sign of the charge-exchange line wings, but data from the other major events are available. We therefore display all of this information in the ten-panel plots of Figures 7 and 8, which represent integrations over the impulsive and gradual phases of each event. We have defined these time intervals by referring to the GOES event times, with adjustments to match the 30.4 nm event time histories as seen by EVE/MEGS-A, which differ in some details. Table 2 lists the times used for the integrations. In general, a simple background subtraction from a pre-flare level should suffice to show the newly-appearing emission features associated with a flare. In practice, though, there may be systematic uncertainties regarding this. As Bornmann (1990) pointed out in the context of whole-Sun soft X-ray observations, if a flaring structure had previously been contributing to the background level and were inadvertently subtracted, this would result in an overestimate of the flare brightness in that feature. Also, EUV radiation generally can easily be absorbed by cool material such as that often found near active regions in prominences. In these ten cases, there are no obvious negative features in the difference spectra, but these caveats should generally be borne in mind.

These figures make it clear that the spectra do not show bright wings of the 30.4 nm line that could be attributed to the expected signature. In each of the plots the dashed line indicates 1% of the peak irradiance of the line itself, which is about the level expected from the calculation of Peter et al. (1990). Note that this expected signature would occur mainly in the impulsive phase and (theoretically) should be much less prominent in the gradual phase. All of these events show the presence of non-thermal particles in various ways, including line γ -radiation and SEPs (but in the case of SOL2011-09-22, only radio signatures), and this set of events therefore provides the best test of this theory thus far possible. The absence of a charge-exchange signature is somewhat unexpected, noting that

Canfield & Chang (1985) made a strong case for detectability near $\text{Ly}\alpha$. The presence of fast neutral atoms associated with flares (Mewaldt et al. 2009) also suggests the operation of this mechanism, at least for SEP particles.

4. Discussion

Although the charge-exchange signature does not reveal itself here, some of the events do have the appearance of a broad continuum both in the impulsive and gradual phases. As shown in Figure 6, the CHIANTI models (Dere et al. 1997, 2009) do show the presence of a broad continuum due to free-free and free-bound contributions. Hudson & Ohki (1972) and Shimabukuro (1972) showed that the soft X-ray thermal continuum, as observed by GOES, extends into the cm-wavelength range. Therefore such a component must be present at some level throughout the EUV. Note that the identification of true continuum regions in the spectrum is not straightforward because of the large numbers of emission lines. Figure 9 shows *ad hoc* overlays of CHIANTI continua calculated for coronal abundances and the Mazzotta et al. (1998) ionization-equilibrium tables. This comparison shows clearly that continuum from hot plasma, at flare temperatures, could not explain the broad-band excess. Plasma at lower temperatures (chromospheric/transition region, rather than coronal) could be present, in which case this EUV continuum might eventually reappear in the far infrared/radio domain. Figure 6 shows that the standard CHIANTI “flare” DEM has such a continuum close to the observed levels in our selected continuum bands. Thus a pseudo-continuum made up largely of emission lines would not be necessary. We note (from Figure 9) that a pseudo-continuum may be prominent below 14 nm, possibly reflecting the density of lines in that region; the red and blue lines show respectively a GOES-like 10^7 K thermal continuum, mainly free-free-free emission in the EUV range, and a cooler 10^6 spectrum for reference. It is also quite possible that scattered light within the instrument

could play a role, but this too would be inconsistent with the appearance of the CHIANTI model continuum in Figure 6. A further point requiring investigation would be the possible absorption spectrum of cool intervening material (e.g., Kucera et al. 1998). However, none of these explanations would affect our conclusions about the charge-exchange radiation, and so lie beyond the scope of the present paper.

We now have the task of understanding why the charge-exchange wings at 30.4 nm do not appear in the EVE spectra. The flares we have studied definitely have hard X-ray emission and, in some cases, γ -ray line fluxes. Generally these flares are the best candidates for the line-wing search. To function, though, the charge-exchange process requires the penetration of the particle beam into a weakly ionized region. This requirement conflicts at some level with the fact that flares involve strong heating and ionization of the very atmosphere into which the particles penetrate. This effect has been considered theoretically and via modeling (Canfield & Chang 1985; Fisher et al. 1985; Peter et al. 1990; Brosius & Woodgate 1999), since the original theoretical estimates were based on an equilibrium state within the interacting beam and plasma. As the beam becomes more intense, this assumption fails, and so there is a time scale for its validity (see Figure 5 of Canfield & Chang, and Figure 11 of Peter et al., as well as Table 1 of Brosius & Woodgate, 1999). Roughly speaking, the charge-exchange signal will decrease in intensity according to the ratio of the time scale for substantial ionization to be caused by the beam, to the duration of the existence of the beam at a given location. For a weak beam structure (a negligible non-Maxwellian tail), as one might expect for example from a spatially diffusive acceleration process, this ratio might remain near unity. In the only suggested detection of the Ly α wing signature, the stellar-flare observation of Woodgate et al. (1980), the duration was only a few seconds.

For a particle interaction highly concentrated into small areas, which is what we

observe in hard X-rays (e.g. Hudson et al. 2006; Krucker et al. 2011), this weak-ionization approximation might apply only locally. The close timing relationship of γ -ray and hard X-ray emissions in the impulsive phase (e.g.,) suggests that proton loss regions (and therefore most likely those of α -particles) may be similarly compact. We presently do not have sufficient angular resolution for γ -rays, but there are strong indications from the *RHESSI* observations that these regions may have the double-footpoint property of the hard X-ray sources (Hurford et al. 2006).

The Peter et al. (1990) calculations for the He II charge-exchange wings assumed a small monoenergetic flux of primary α particles, 5% by number of a total beam flux of $10^{13} \text{ (cm}^2 \text{ s)}^{-1}$, corresponding to about 1% of the energy of a “small flare” of total energy 10^{28} erg. These already result in a peak-to-wing intensity ratio of greater than 1%, which conflicts directly with our lack of a signature at a much lower level for much more powerful flares. Further, to interpret the flare γ -ray observations (including those reflecting primary α particles directly; see e.g. Murphy et al. 1991), a larger α fraction (50%) is assumed or deduced. These assumptions together suggest a discrepancy between theory and observation of several orders of magnitude. We cannot describe this more precisely because of the assumptions necessary for the theoretical estimates, which should be tackled again with input from the improved observations. Among these assumptions we could also add the primary particle spectral distribution; the beauty of the Orrall-Zirker theory is that we could use charge-exchange reactions to detect low-energy particles. If in fact the acceleration process does not produce large numbers of low-energy primaries, that also could affect the predicted fluxes.

5. Conclusions

The EVE data make it possible to search for the broad charge-exchange line wings expected in the EUV from a solar flare that accelerates high-energy α -particles, which we expect always to be present in any γ -ray line event. We have studied ten flares, including known γ -ray events and the seven X-class flares from Cycle 24 thus far, in a search for this process. There is no charge-exchange signal present in any of these flares, at least according to the signatures predicted by the existing theoretical work. We suggest that further theoretical work may reveal interesting details that explain this discrepancy. In particular new calculations should deal with the ionization levels more self-consistently.

Acknowledgements: This work was supported by NASA under Contract NAS5-98033 for *RHESSI* for author HSH, who would also like to thank the Physics and Astronomy Group at the University of Glasgow for hospitality. This work was supported by the Science and Technology Facilities Council grant STFC/F002941/1, by Leverhulme Foundation Grant F00-179A and by the EU via the HESPE project FP7-2010-SPACE-1/263086. This work benefited from the hospitality of the International Space Science Institute (Bern), in particular its team activity Flare Chromospheres.

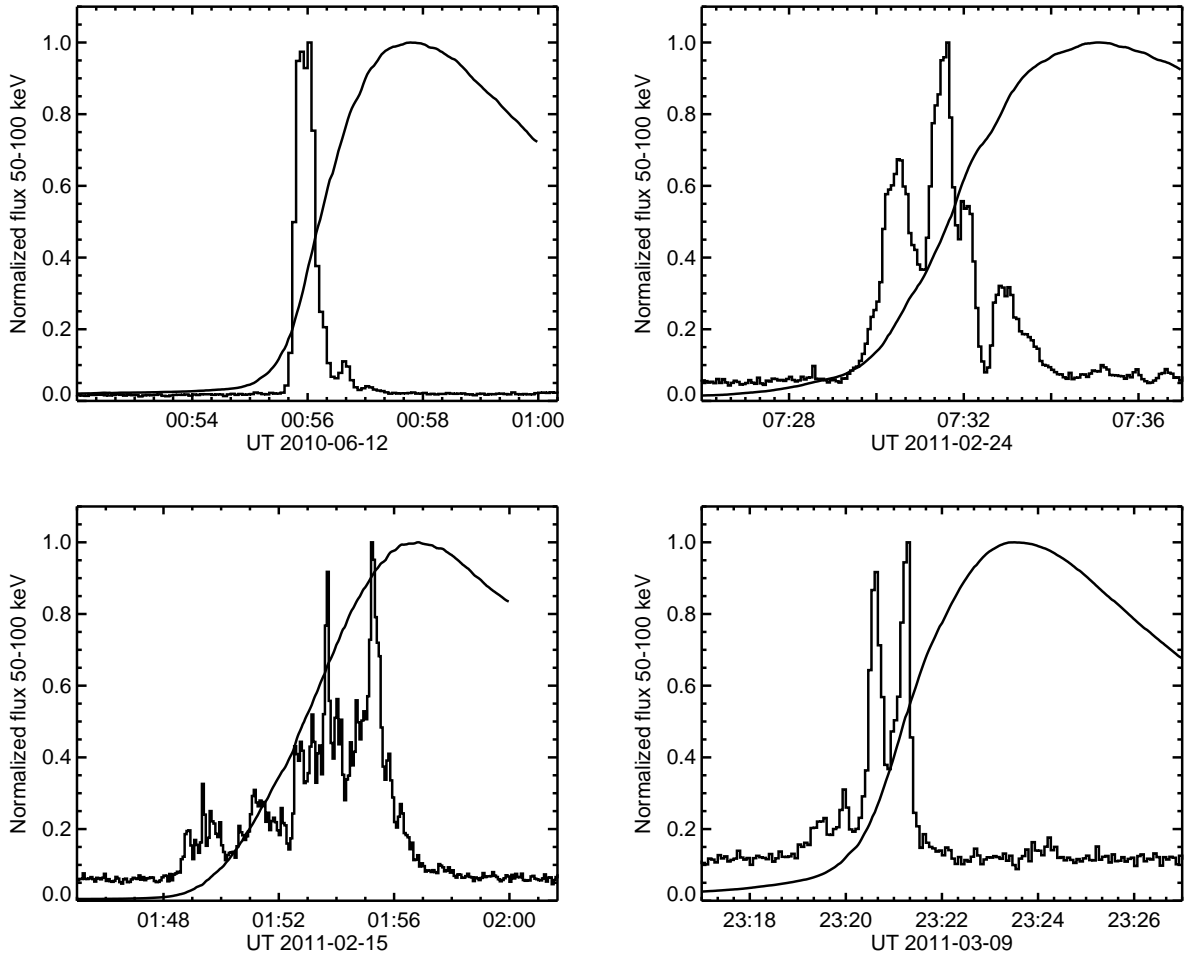


Fig. 1.— The *RHESSI* 50-100 keV and *GOES* 1-8 Å time profiles for the four primary flares, each trace normalized to unity. The upper row shows the γ -ray flares, and the lower row the X-class flares.

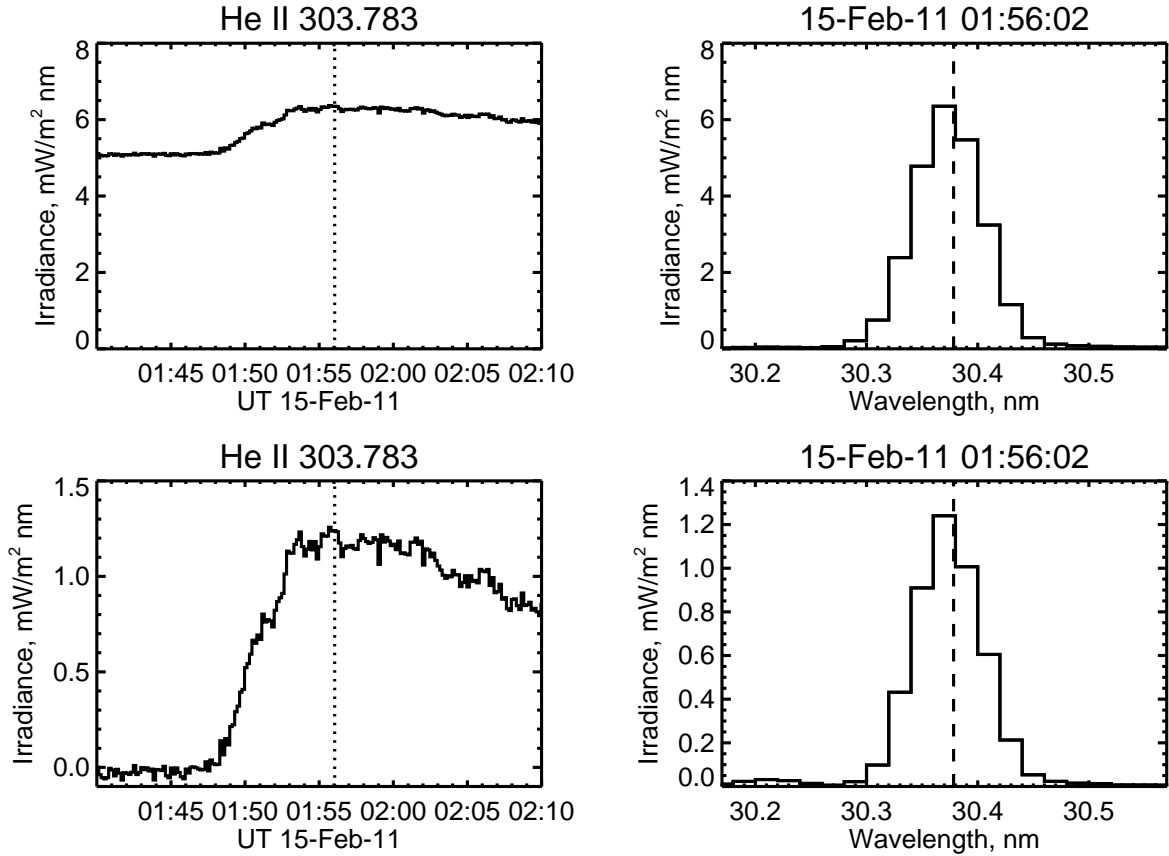


Fig. 2.— Overview of the behavior of the He II 30.4 nm line during the flare SOL2011-02-15T01:56 (X2.2). It resulted in an increase of about 20% in the total 30.4 nm flux in total. The dotted line shows the time of *GOES* maximum, showing that the 30.4 nm emission appeared in the impulsive phase as well as later on. For the lower plots a (single) background integration at 01:40 UT was subtracted both from the time series (left, for a single MEGS-A spectral bin at the line peak wavelength), and the spectrum (right), shown for the GOES peak time of 01:56 UT. The dashed line in the right panels shows the nominal mean wavelength of the doublet as listed in CHIANTI.

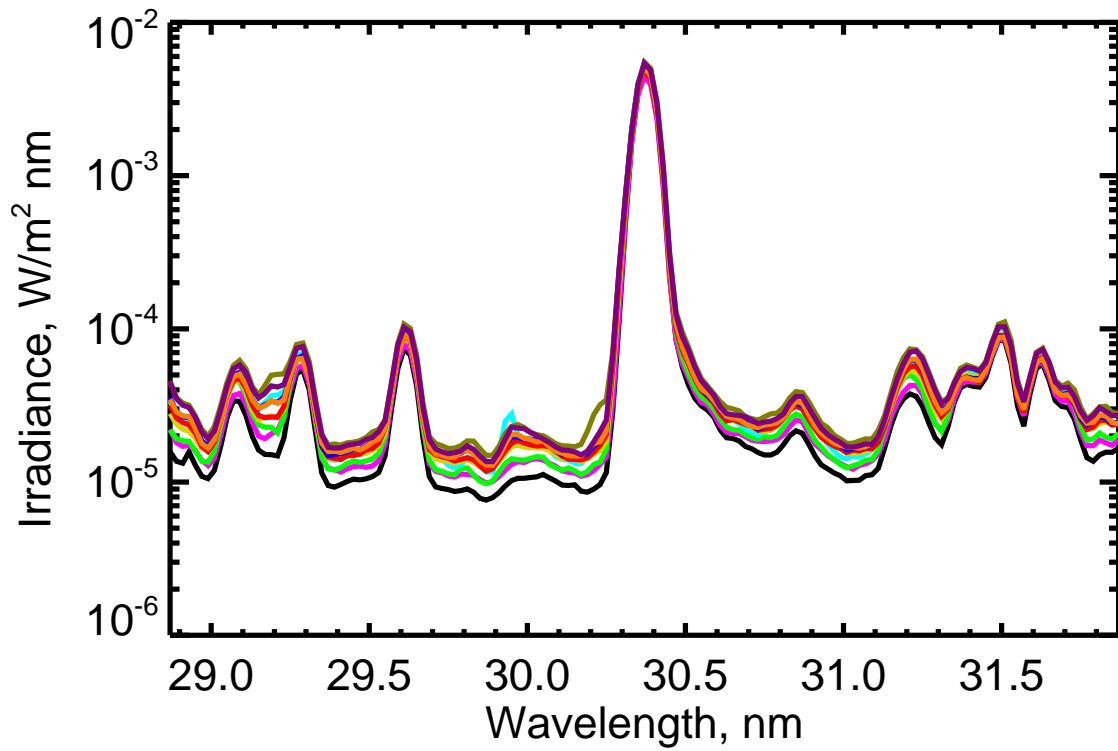


Fig. 3.— EVE MEGS-A background spectra for the ten flares (SOL2010-06-12 in black, the lowest line, and the others in various colors).

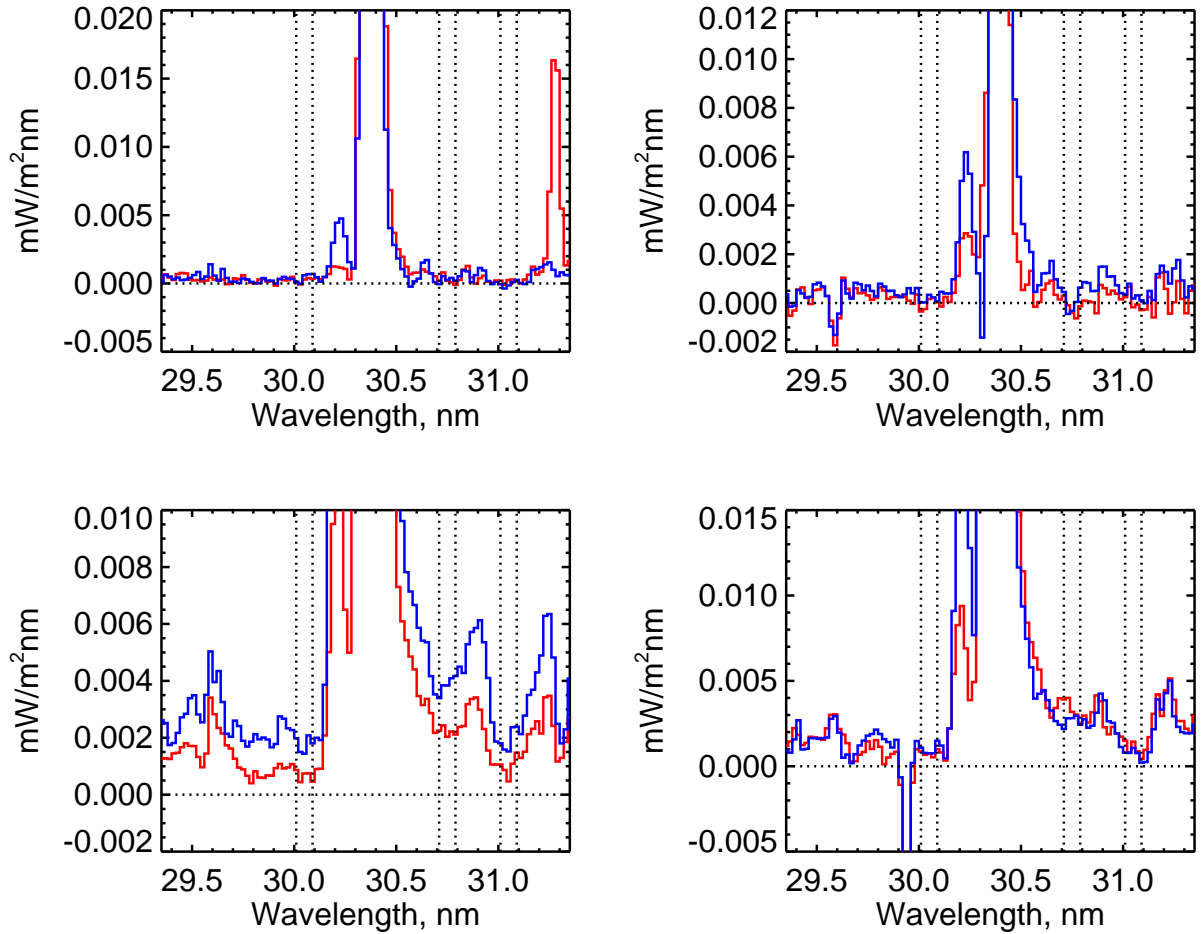


Fig. 4.— The EUV spectra for the four primary flares, in the order shown in Figure 1. In each case the red line shows the excess spectrum during the impulsive phase, and the blue line the gradual phase, as defined in Table 1. From left to right, the dotted lines show the blue-1, red-1, and red-2 bands.

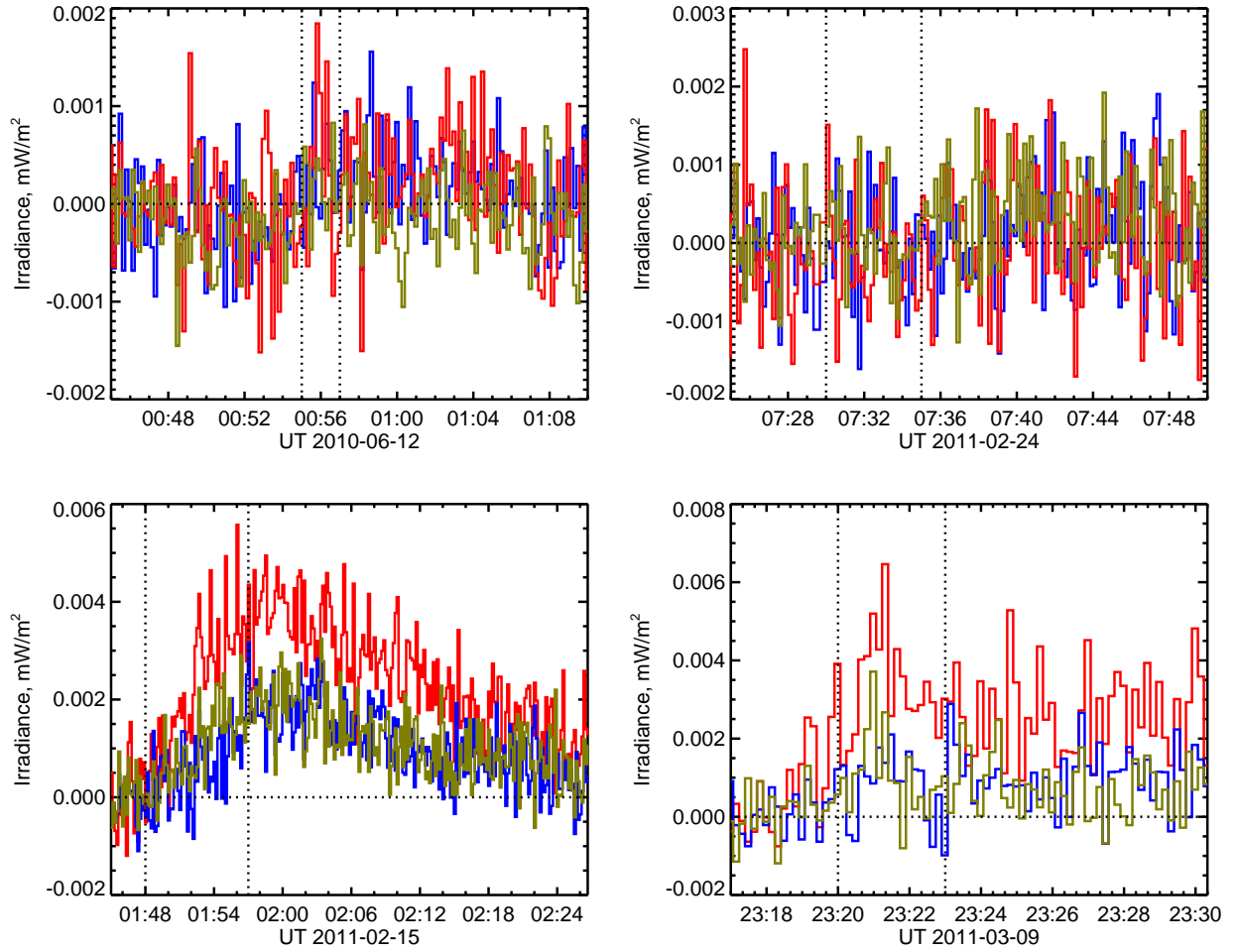


Fig. 5.— The EUV time series for each spectral band, in the order shown in Figure 1. Red-1 is in red, red-2 in gold, and blue-1 in blue. The vertical dotted lines show the time range of the impulsive phase.

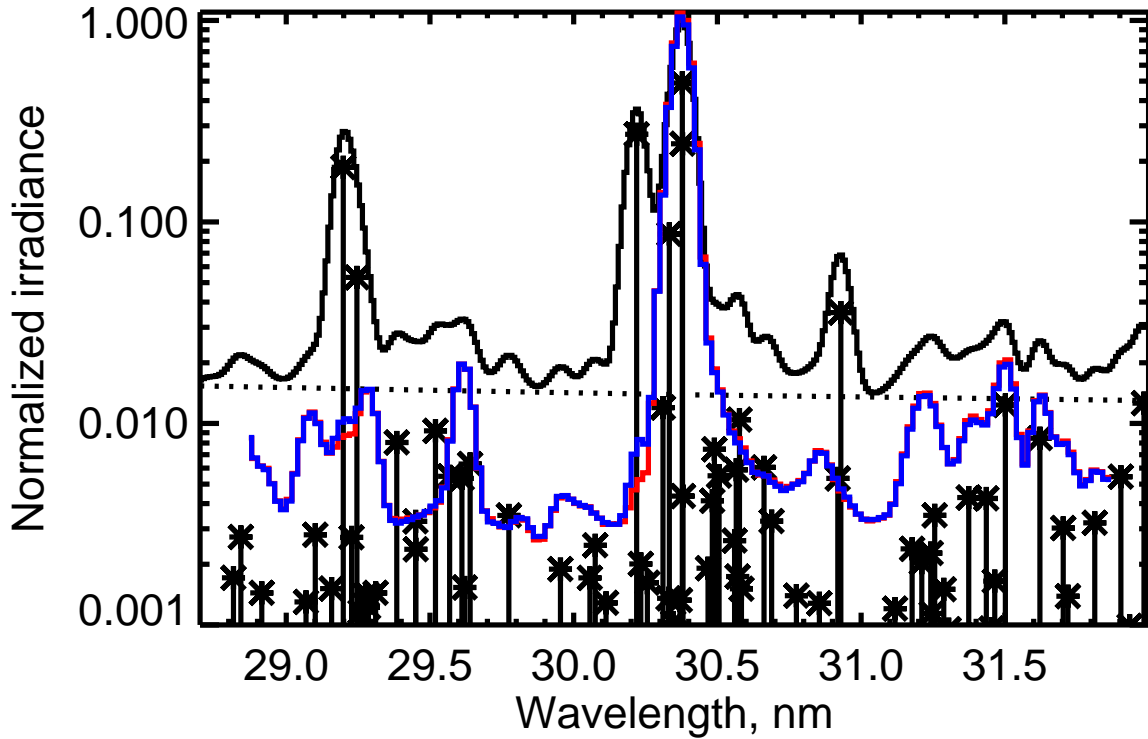


Fig. 6.— CHANTI model spectrum smoothed to MEGS-A resolution (black histogram), with the strong lines (asterisks) shown for the region of the charge-exchange continuum; the dotted line shows the CHANTI model continuum, based on the flare DEM of Dere & Cook (1979). The model uses the coronal abundances of Feldman et al. (1992) and the Mazzotta et al. (1998) ionization equilibrium. The red and blue spectra are the impulsive-phase and gradual-phase integrations for SOL2010-06-12. Note that the line populations show both agreements and differences.

Table 2: Time intervals

Background	Start	Peak	End
12-Jun-10 00:52	12-Jun-10 00:55	12-Jun-10 00:57	12-Jun-10 01:07
24-Feb-11 07:25	24-Feb-11 07:30	24-Feb-11 07:35	24-Feb-11 07:50
15-Feb-11 01:45	15-Feb-11 01:48	15-Feb-11 01:57	15-Feb-11 02:20
09-Mar-11 23:17	09-Mar-11 23:19	09-Mar-11 23:23	09-Mar-11 23:29
04-Aug-11 03:35	04-Aug-11 03:44	04-Aug-11 03:57	04-Aug-11 04:04
09-Aug-11 07:55	09-Aug-11 08:00	09-Aug-11 08:08	09-Aug-11 08:15
06-Sep-11 22:12	06-Sep-11 22:16	06-Sep-11 22:25	06-Sep-11 22:40
07-Sep-11 22:30	07-Sep-11 22:34	07-Sep-11 22:40	07-Sep-11 22:48
22-Sep-11 10:45	22-Sep-11 10:50	22-Sep-11 11:01	22-Sep-11 11:11
24-Sep-11 09:32	24-Sep-11 09:34	24-Sep-11 09:40	24-Sep-11 09:48

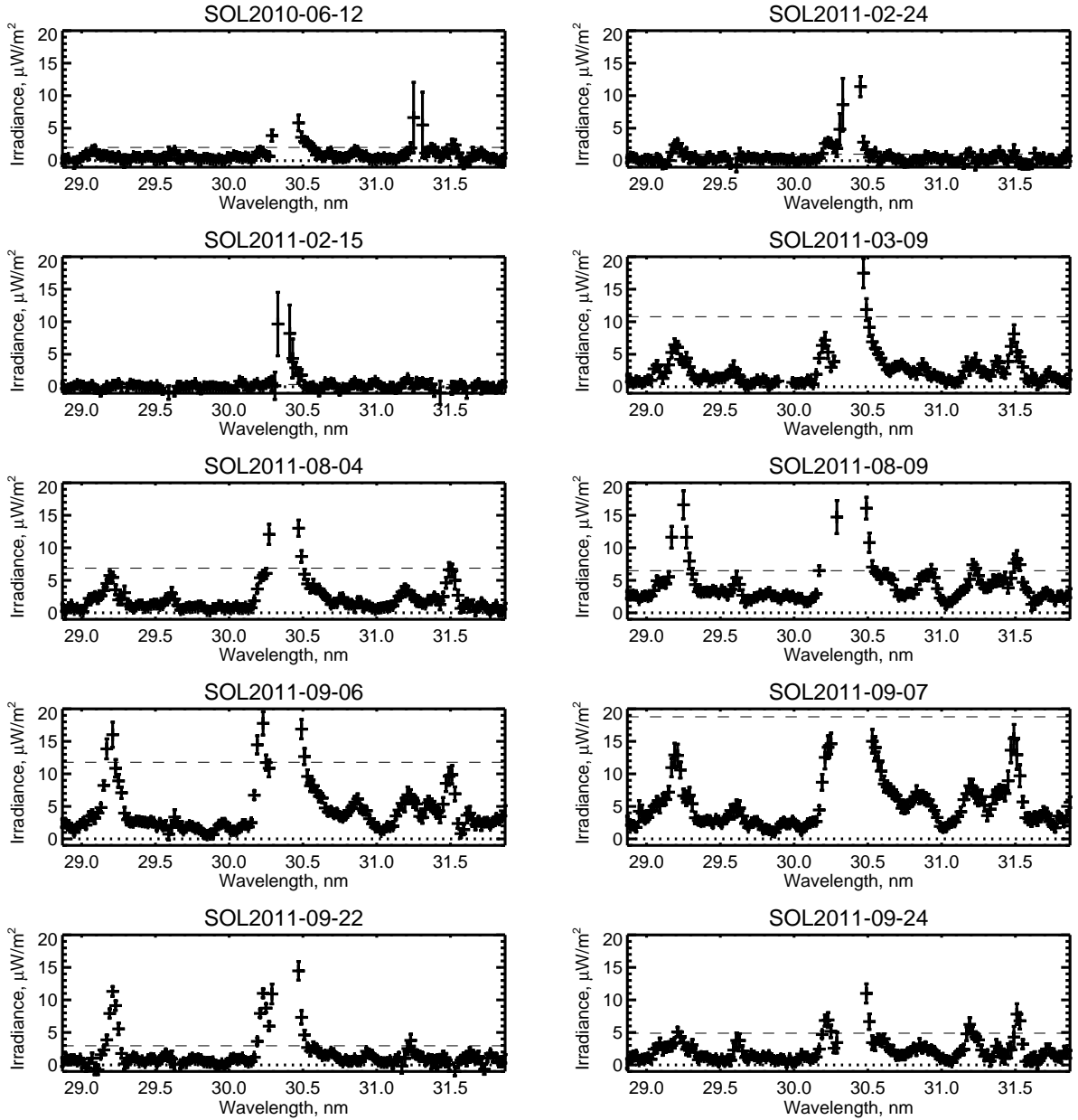


Fig. 7.— Integrated excess irradiance spectra for the impulsive phases of the ten flares, using the start-peak intervals as defined in Table 2. The background intervals are each 110 s beginning at the reference time listed in the table. The horizontal dotted line shows zero excess, and the dashed lines show 1% of the peak irradiance in the line for each integration.

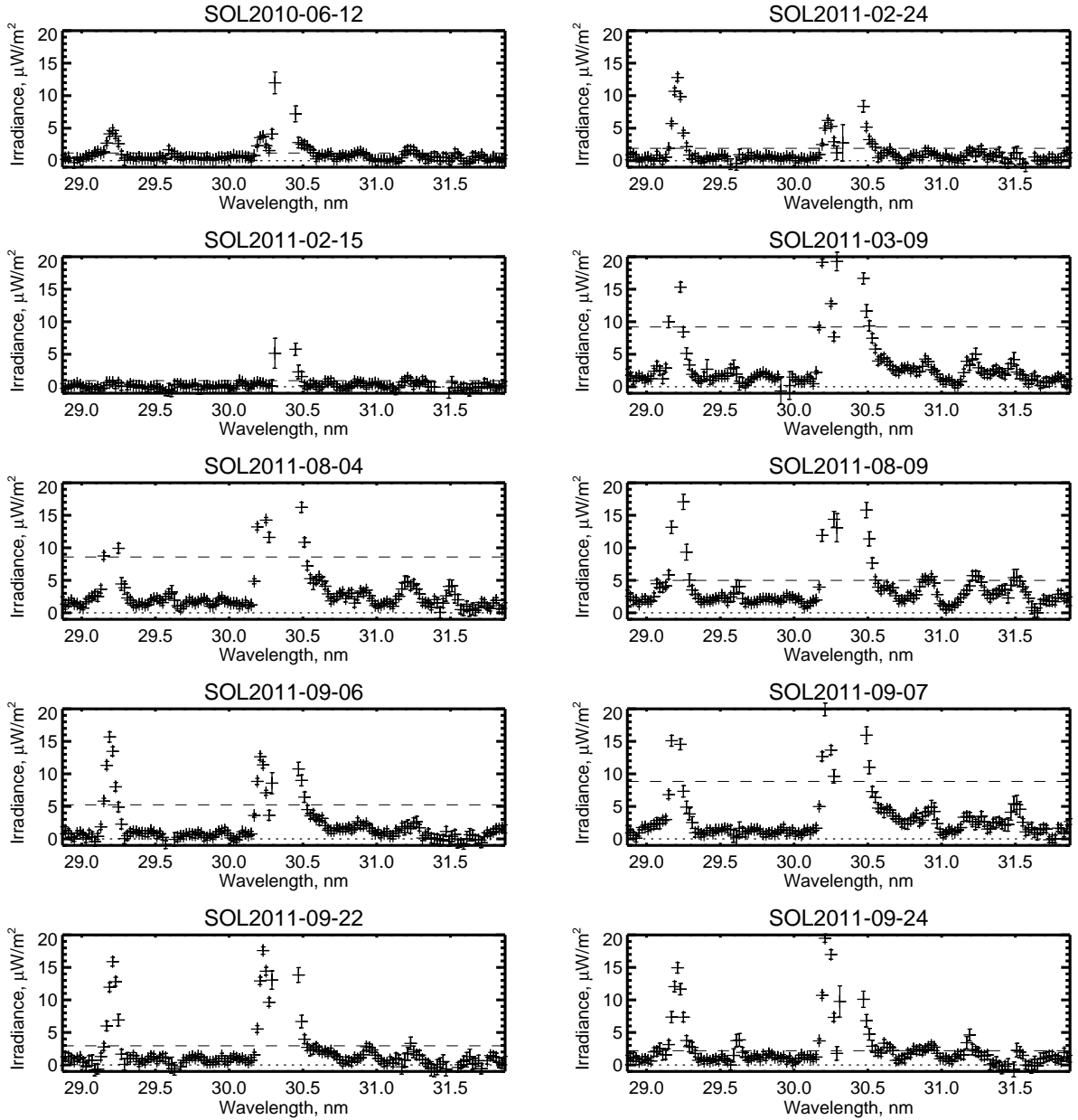


Fig. 8.— Integrated excess irradiance spectra for the gradual phases of the ten flares, using the peak-end intervals as defined in Table 2. The background intervals are each 110 s beginning at the reference time listed in the table. The horizontal dotted line shows zero excess, and the dashed lines show 1% of the peak irradiance in the line for each integration.

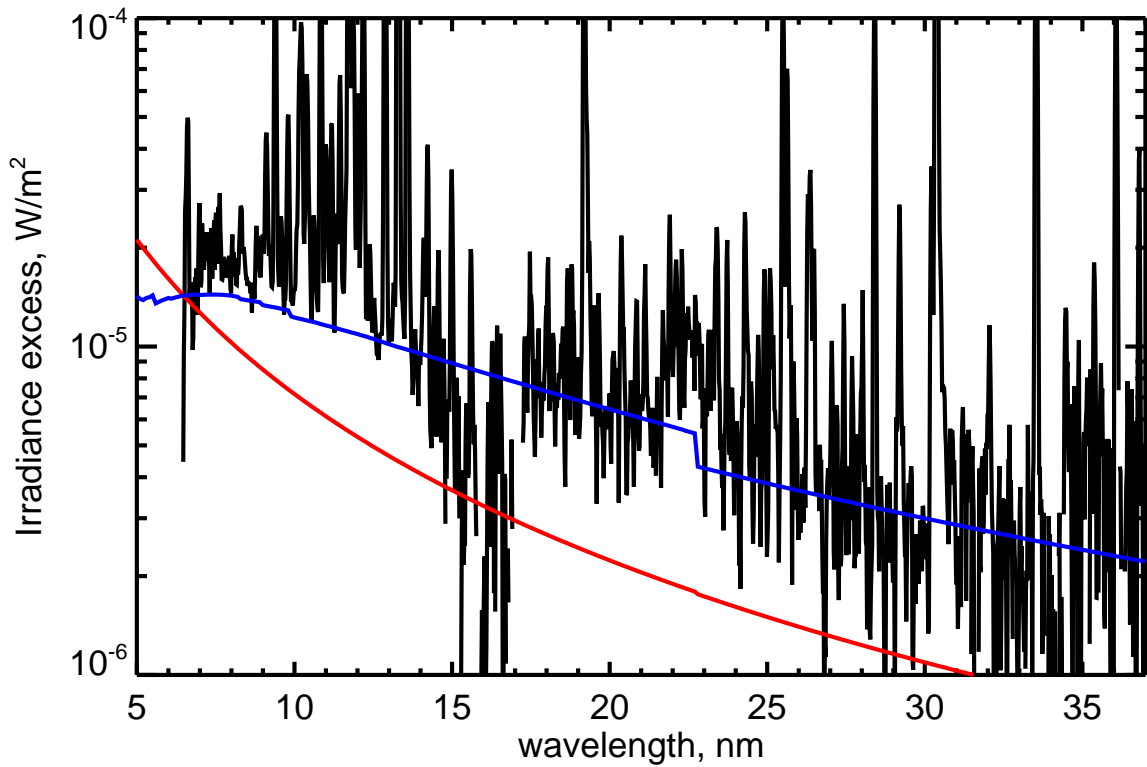


Fig. 9.— EVE/MEGS-A spectrum, 5-37 nm, for the flare excess component of SOL2011-02-15 in the gradual phase (Table 1). The lines overlaid are CHIANTI free-free plus free-bound continua for 10^7 K (red) and 10^6 K (blue), arbitrarily normalized at the short-wavelength end of the range. The red line thus sketches the EUV contribution of the continuum inferred from standard GOES observations. At the lower temperature the He II Lyman edge is visible in the model, and perhaps weakly in the data as well.

REFERENCES

- Bornmann, P. L. 1990, *ApJ*, 356, 733
- Brosius, J. W. 2001, *ApJ*, 555, 435
- Brosius, J. W., Robinson, R. D., & Maran, S. P. 1995, *ApJ*, 441, 385
- Brosius, J. W. & Woodgate, B. E. 1999, *ApJ*, 514, 430
- Canfield, R. C. & Chang, C.-R. 1985, *ApJ*, 295, 275
- Dere, K. P. & Cook, J. W. 1979, *ApJ*, 229, 772
- Dere, K. P., Landi, E., Mason, H. E., Monsignori Fossi, B. C., & Young, P. R. 1997, *A&AS*, 125, 149
- Dere, K. P., Landi, E., Young, P. R., Del Zanna, G., Landini, M., & Mason, H. E. 2009, *A&A*, 498, 915
- Eather, R. H. 1967, *Reviews of Geophysics and Space Physics*, 5, 207
- Emslie, A. G. & Brown, J. C. 1985, *ApJ*, 295, 648
- Feldman, U. 1987, *Atlas of extreme ultraviolet spectroheliograms from 170 to 625 Å*.
Volume 1; Volume 2, ed. Feldman, U.
- Feldman, U., Mandelbaum, P., Seely, J. F., Doschek, G. A., & Gursky, H. 1992, *ApJS*, 81, 387
- Fisher, G. H., Canfield, R. C., & McClymont, A. N. 1985, *ApJ*, 289, 425
- Hudson, H. S. & Ohki, K. 1972, *Sol. Phys.*, 23, 155
- Hudson, H. S., Wolfson, C. J., & Metcalf, T. R. 2006, *Sol. Phys.*, 234, 79

- Hudson, H. S., Woods, T. N., Chamberlin, P. C., Fletcher, L., Del Zanna, G., Didkovsky, L., Labrosse, N., & Graham, D. 2011, *Sol. Phys.*, 273, 69
- Hurford, G. J., Krucker, S., Lin, R. P., Schwartz, R. A., Share, G. H., & Smith, D. M. 2006, *ApJ*, 644, L93
- Krucker, S., Hudson, H. S., Jeffrey, N. L. S., Battaglia, M., Kontar, E. P., Benz, A. O., Csillaghy, A., & Lin, R. P. 2011, *ApJ*, 739, 96
- Kucera, T. A., Andretta, V., & Poland, A. I. 1998, *Sol. Phys.*, 183, 107
- Lin, R. P., Dennis, B. R., Hurford, G. J., Smith, D. M., Zehnder, A., Harvey, P. R., Curtis, D. W., Pankow, D., Turin, P., Bester, M., Csillaghy, A., Lewis, M., Madden, N., van Beek, H. F., Appleby, M., Raudorf, T., McTiernan, J., Ramaty, R., Schmahl, E., Schwartz, R., Krucker, S., Abiad, R., Quinn, T., Berg, P., Hashii, M., Sterling, R., Jackson, R., Pratt, R., Campbell, R. D., Malone, D., Landis, D., Barrington-Leigh, C. P., Slassi-Sennou, S., Cork, C., Clark, D., Amato, D., Orwig, L., Boyle, R., Banks, I. S., Shirey, K., Tolbert, A. K., Zarro, D., Snow, F., Thomsen, K., Henneck, R., Mchedlishvili, A., Ming, P., Fivian, M., Jordan, J., Wanner, R., Crubb, J., Preble, J., Matranga, M., Benz, A., Hudson, H., Canfield, R. C., Holman, G. D., Crannell, C., Kosugi, T., Emslie, A. G., Vilmer, N., Brown, J. C., Johns-Krull, C., Aschwanden, M., Metcalf, T., & Conway, A. 2002, *Sol. Phys.*, 210, 3
- Lin, R. P. & Hudson, H. S. 1976, *Sol. Phys.*, 50, 153
- Martens, P. C. H. & Young, A. 1990, *ApJS*, 73, 333
- Mazzotta, P., Mazzitelli, G., Colafrancesco, S., & Vittorio, N. 1998, *A&AS*, 133, 403
- Mewaldt, R. A., Cohen, C. M. S., Giacalone, J., Mason, G. M., Chollet, E. E., Desai, M. I., Haggerty, D. K., Looper, M. D., Selesnick, R. S., & Vourlidas, A. 2008, in *American*

- Institute of Physics Conference Series, Vol. 1039, American Institute of Physics Conference Series, ed. G. Li, Q. Hu, O. Verkhoglyadova, G. P. Zank, R. P. Lin, & J. Luhmann , 111–117
- Mewaldt, R. A., Leske, R. A., Stone, E. C., Barghouty, A. F., Labrador, A. W., Cohen, C. M. S., Cummings, A. C., Davis, A. J., von Roseninge, T. T., & Wiedenbeck, M. E. 2009, *ApJ*, 693, L11
- Orrall, F. Q. & Zirker, J. B. 1976, *ApJ*, 208, 618
- Peter, T., Ragozin, E. N., Urnov, A. M., Uskov, D. B., & Rust, D. M. 1990, *ApJ*, 351, 317
- Ramaty, R., Mandzhavidze, N., Kozlovsky, B., & Murphy, R. J. 1995, *ApJ*, 455, L193+
- Schwartz, R. A., Dennis, B., Tolbert, A. K., Murphy, R., Share, G., Fishman, G., Briggs, M., Longo, F., Diehl, R., & Wijers, R. 2010, in *Bulletin of the American Astronomical Society*, Vol. 41, American Astronomical Society Meeting Abstracts #216, #404.06–+
- Share, G. H. & Murphy, R. J. 1997, *ApJ*, 485, 409
- . 1998, *ApJ*, 508, 876
- Shimabukuro, F. I. 1972, *Sol. Phys.*, 23, 169
- Simnett, G. M. 1995, *Space Sci. Rev.*, 73, 387
- Tamres, D. H., Melrose, D. B., & Canfield, R. C. 1989, *ApJ*, 342, 576
- Vegard, L. 1939, *Nature*, 144, 1089
- Woodgate, B. E., Brandt, J. C., Kalet, M. W., Kenny, P. J., Tandberg-Hanssen, E. A., Bruner, E. C., Beckers, J. M., Henze, W., Knox, E. D., & Hyder, C. L. 1980, *Sol. Phys.*, 65, 73

Woods, T. N., Eparvier, F. G., Hock, R., Jones, A. R., Woodraska, D., Judge, D.,
Didkovsky, L., Lean, J., Mariska, J., Warren, H., McMullin, D., Chamberlin, P.,
Berthiaume, G., Bailey, S., Fuller-Rowell, T., Sojka, J., Tobiska, W. K., & Viereck,
R. 2010, *Sol. Phys.*, 3

Woods, T. N. & the SDO EVE Team. 2010, AGU Fall Meeting Abstracts, A1+

January 22, 2012