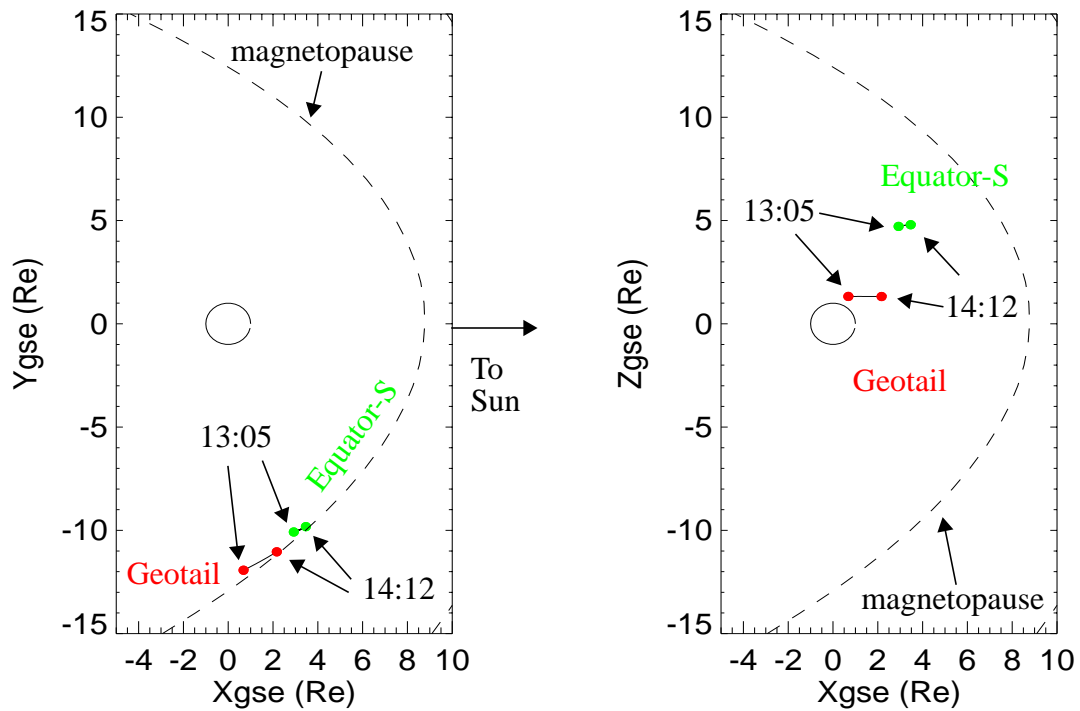
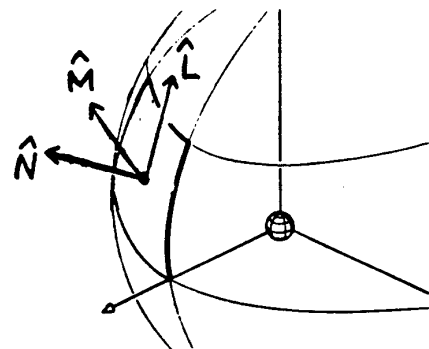
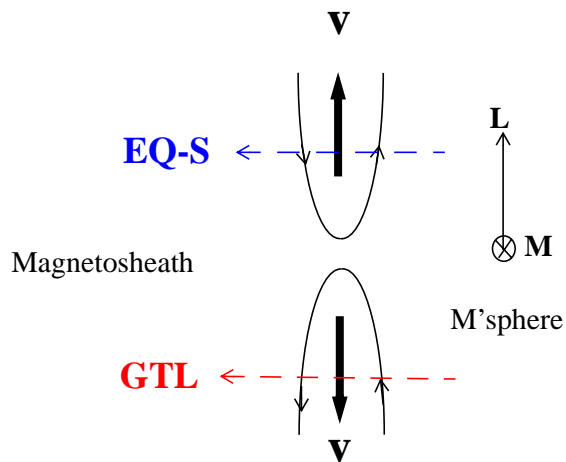
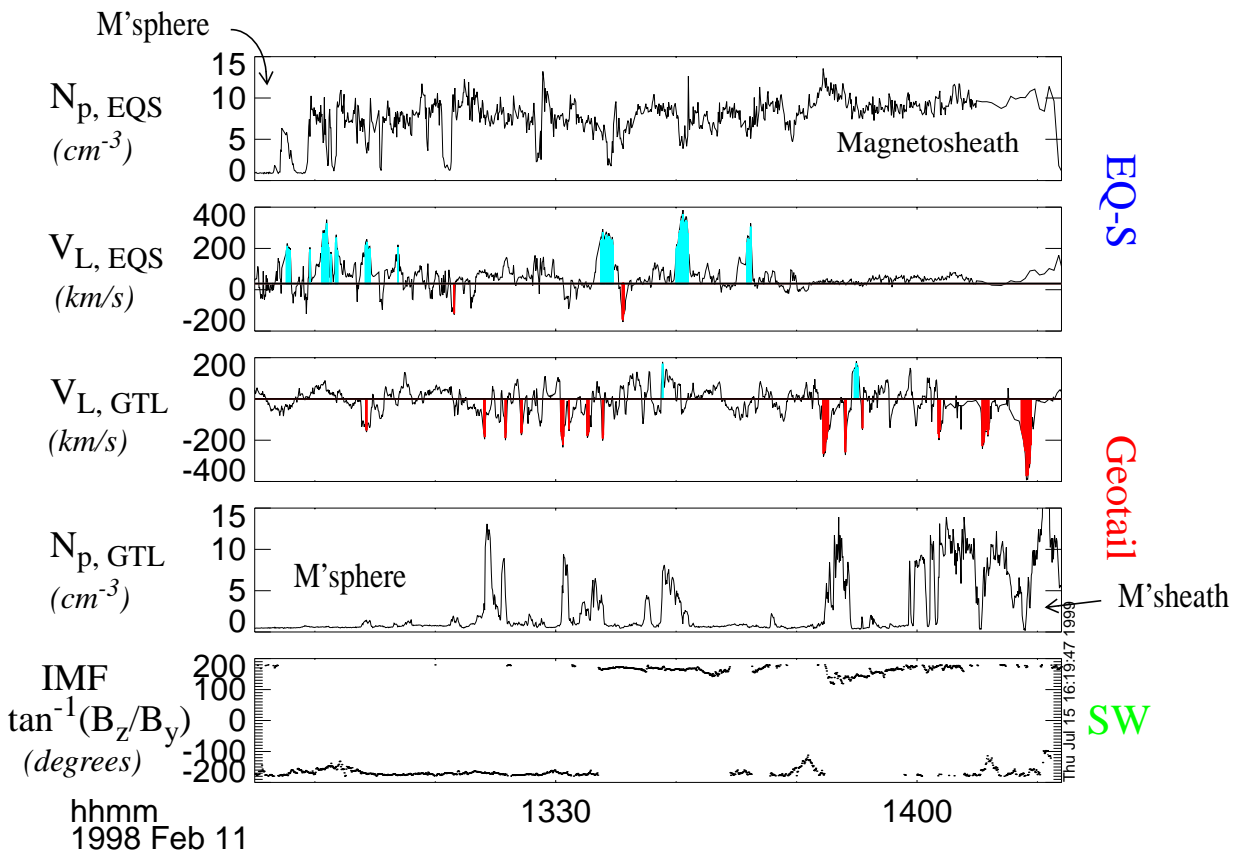


Reconnection Site and Spatial Extent Revealed by Simultaneous Equator-S - Geotail Observations of Reconnection at the Magnetopause

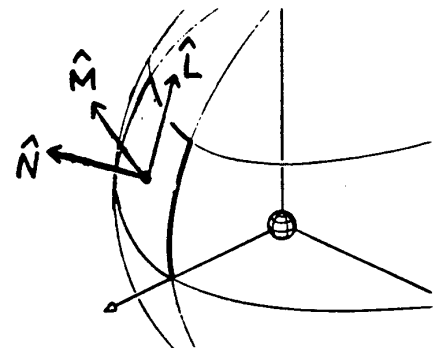
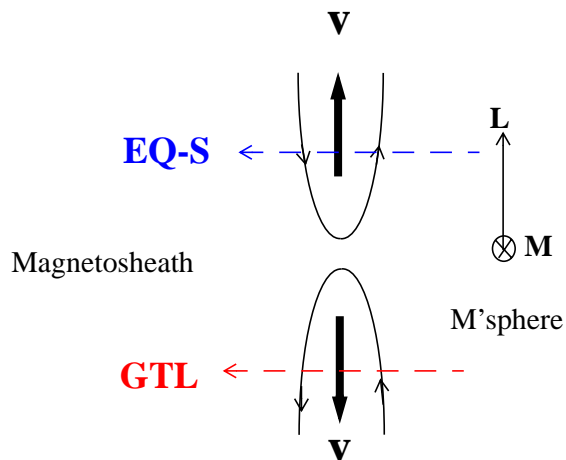
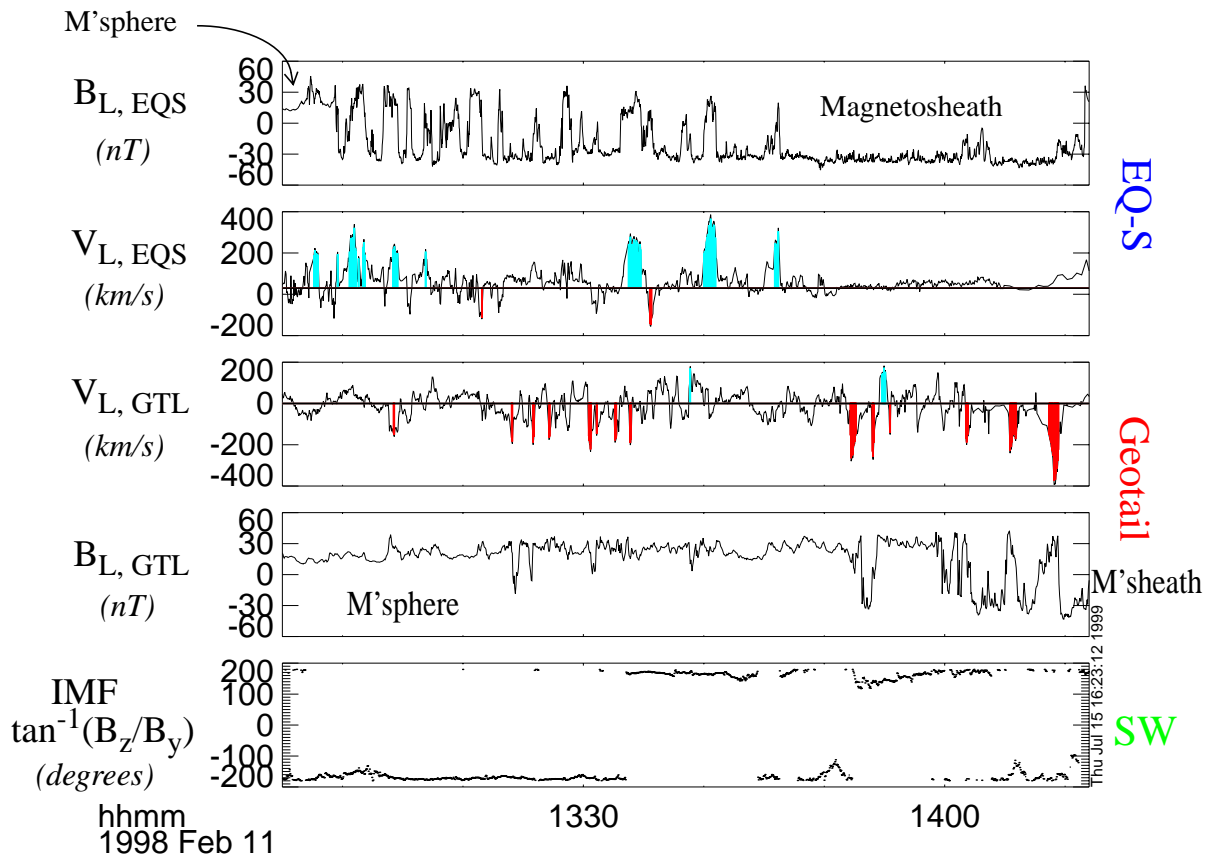


- Equator-S and Geotail skimmed dawn MP
- S/C separation: 4 R_E north-south
3 R_E east-west

EQ-S and Geotail Detected Opposite Reconnection Jets

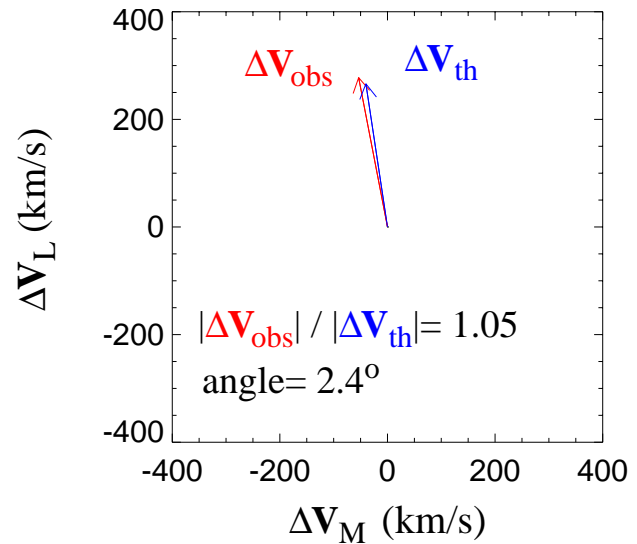
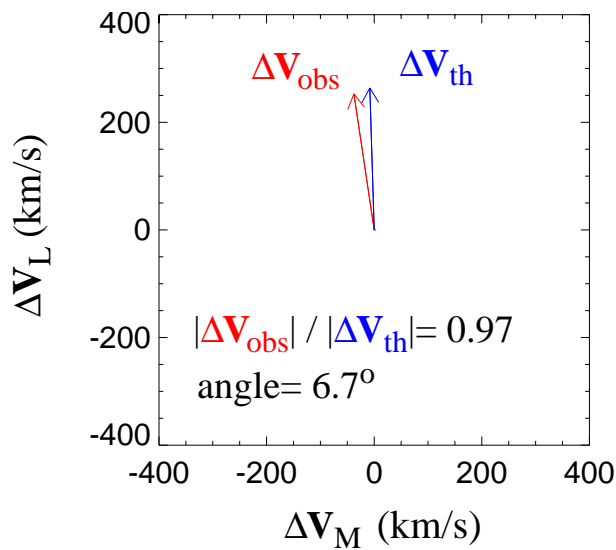
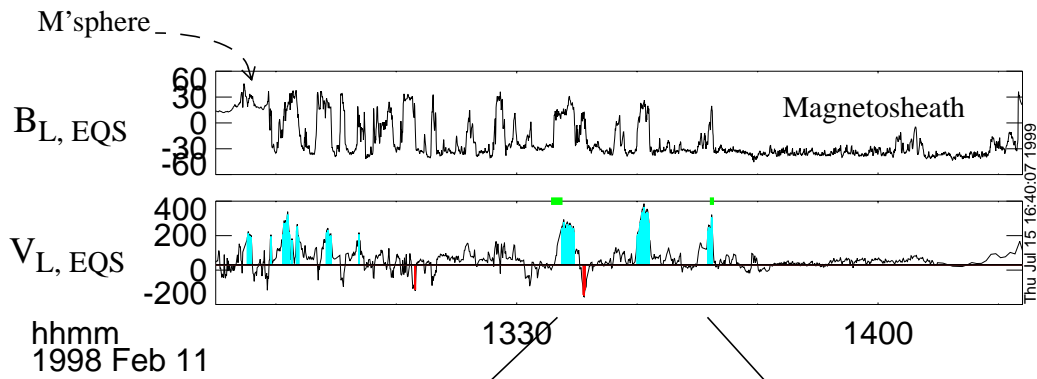
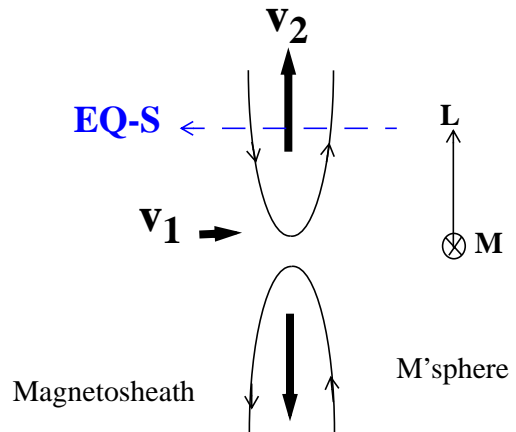


EQ-S and Geotail Detected Opposite Reconnection Jets

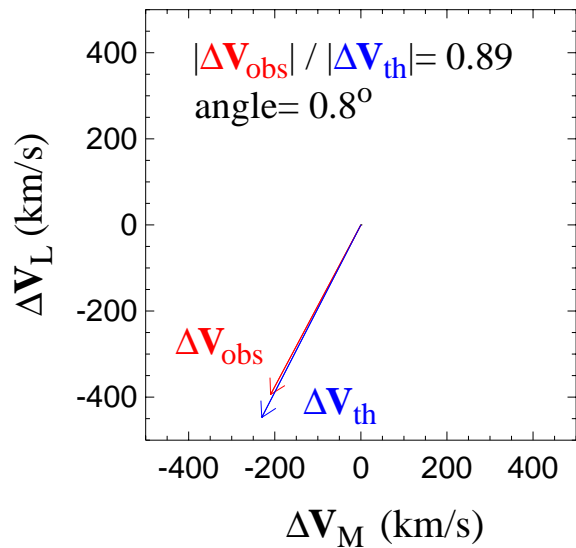
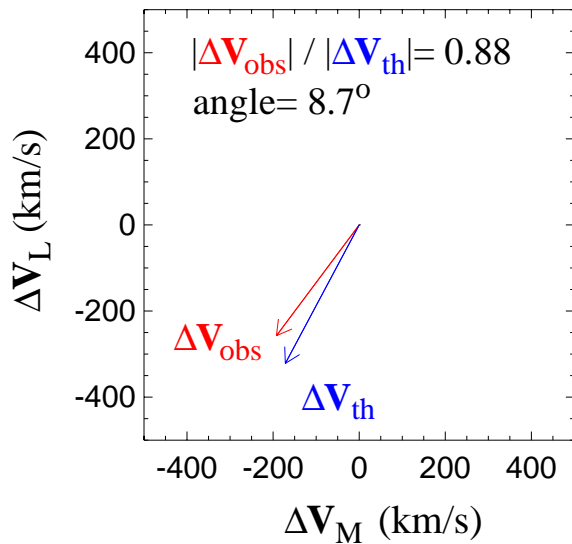
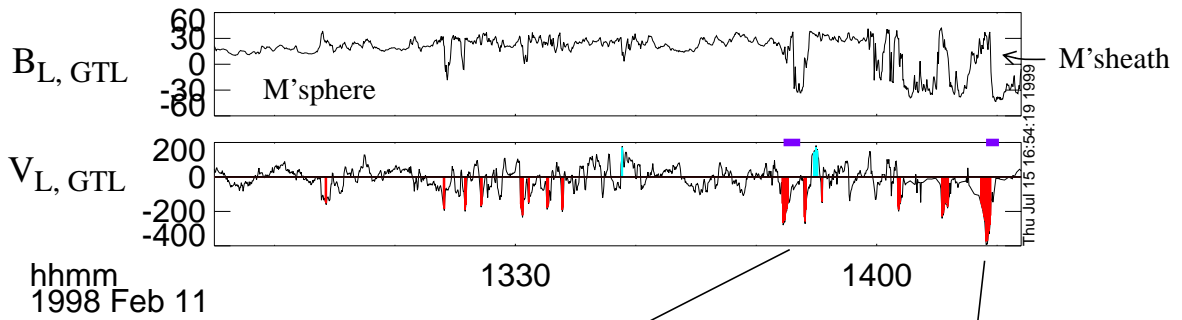
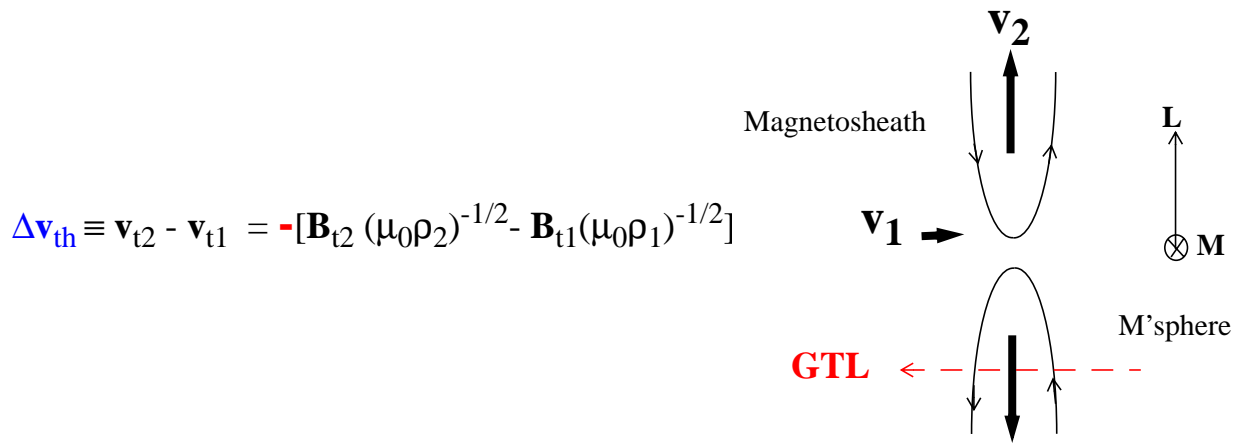


Comparison with Reconnection Theory: Equator-S

$$\Delta \mathbf{v}_{th} \equiv \mathbf{v}_{t2} - \mathbf{v}_{t1} = +[\mathbf{B}_{t2} (\mu_0 \rho_2)^{-1/2} - \mathbf{B}_{t1} (\mu_0 \rho_1)^{-1}]$$



Comparison with Reconnection Theory: Geotail



The Big Picture: Extended X-line along Equatorial Magnetopause

